



Setup Instructions For Your Indoor ShowCase

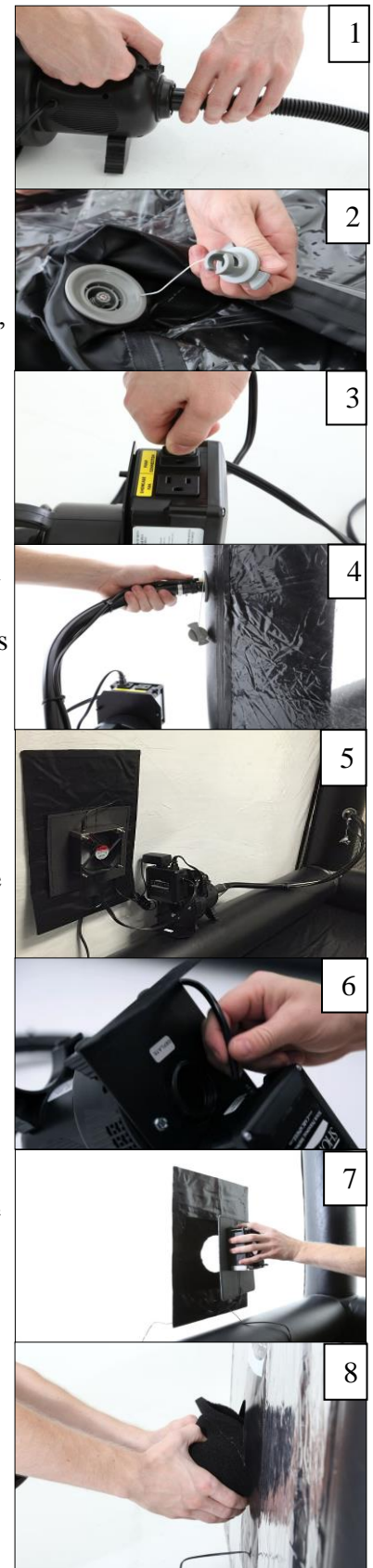
Thank you for purchasing the ShowCase by CarCapsule, the leader in vehicle storage solution innovation and protection. Please inspect the boxes & equipment for any damages or missing pieces and please contact CarCapsule immediately with any issues or concerns at, 219-945-9493.

1. Remove your Showcase from its shipping box and unfold it.
2. Remove the air pump & two hoses from the box and attach the “RIBBED” inflation/deflation hose to the inflation port of the pump. (**fig.1**)
3. Locate the gray inlet fitting on one of the Showcase back corner air columns, and connect the other end of the hose. (**fig.2**)
4. Plug the power cord for the pump unit into the receptacle labeled “PUMP CONNECTION”, and plug the three terminal “GROUNDED” power cord from the pump unit control into a known working power source and turn on the pump. (**fig.3**) When your Showcase is fully inflated, the air columns will become firm and offer resistance when pressure is applied. *Note: During inflation you may be required to assist the support columns to allow air flow and become upright.*
5. Once the Showcase is fully inflated, you may remove the inflation hose, and relocate the pump to the inside of the Showcase, (**fig.5**) and attach the smooth “Maintenance Hose” as you did with the inflation hose. (**fig.4**). Be sure to attach the 1/4” tube to the “Pressure Port” on the underside of the pump “power unit”. (**fig.6**). This will allow the pump to cycle as needed to maintain inflation in your Showcase columns.
Note: Plugging the pump power cord into the control outlet labeled “Showcase Fan”, will result in the pump running continuously.
6. Install the 12V fan panel to the Velcro air intake pad, and attach its power supply to the fan through the accessory cord access hole beneath the fan panel. Plug the fan power cord into the control module outlet labeled “Showcase Fan”. (Fan will run continuously as long as the control module is plugged into a working power source). (**fig.7**).
7. Install the filter by pushing the brim of the filter into the flap provided on the outside of the air intake (**fig.8**)

NOTE: Please refer to the ShowCase setup video at:
www.CarCapsule.com/videos/



Rev. 02-02-16



Weather Operating Tips:

- If the temperature is below 50 degrees, open the ShowCase box and let sit at room temperature for 24 hours. This will make the setup much easier.
- To increase airflow thru the ShowCase to dry wet vehicles, extremely hot weather, and/or high humidity, leave the zippers open about a 6" on one of the access doors. This will increase the air change in the ShowCase.

ShowCase Care:

- Keep the air filter clean by hand washing it in warm water with mild dish soap and allow it to dry. Or blow out with an air hose from the backside.
- If your ShowCase gets dusty or dirty you can use a car duster or warm water with mild dish soap to clean.
- When not in use, store the ShowCase up off the floor in a dry, rodent free place.

Recommendations:

- DO leave your windows half-way down or all the way down & your convertible top up and unlatched if possible.
- Using another cover is not recommended, as it may potentially trap moisture.
- DO NOT place any source of heat inside the capsule, not even a light bulb.
- DO NOT use the indoor ShowCase outdoors.

For more information, contact:
CarCapsule USA @ 219-945-9493
Web: www.CarCapsule.com
Email: Info@CarCapsule.com

MANUFACTURER'S WARRANTY: THIS WARRANTY IS THE SOLE AND EXCLUSIVE

The ShowCase by CarCapsule is guaranteed for one year against all defects in workmanship and materials. Repair or replacement will be made upon receipt of product by CarCapsule USA freight prepaid. Using the ShowCase outdoors will void all warranties. Please contact the place of purchase prior to shipping for warranty work.

WARRANTY GIVEN WITH RESPECT TO THE PRODUCT AND ALL OTHER EXPRESS WARRANTIES ARE HEREBY EXCLUDED, INCLUDING THE WARRANTY OF IMPLIED MERCHANTABILITY. NEITHER CARCAPSULE USA NOR AN AUTHORIZED CARCAPSULE PRODUCT DEALER WHO SELLS THE PRODUCTS IS RESPONSIBLE FOR INDIRECT, INCIDENTAL OR CONSEQUENTIAL DAMAGES. SOME STATES DO NOT ALLOW LIMITATIONS ON HOW LONG AN IMPLIED WARRANTY LASTS AND/OR DO NOT ALLOW THE EXCLUSION OR LIMITATION OF INCIDENTAL OR CONSEQUENTIAL DAMAGES SO THE ABOVE LIMITATION ON IMPLIED WARRANTIES AND/OR THE LIMITATION OR EXCLUSION OF CERTAIN DAMAGES MAY NOT APPLY TO YOU.